

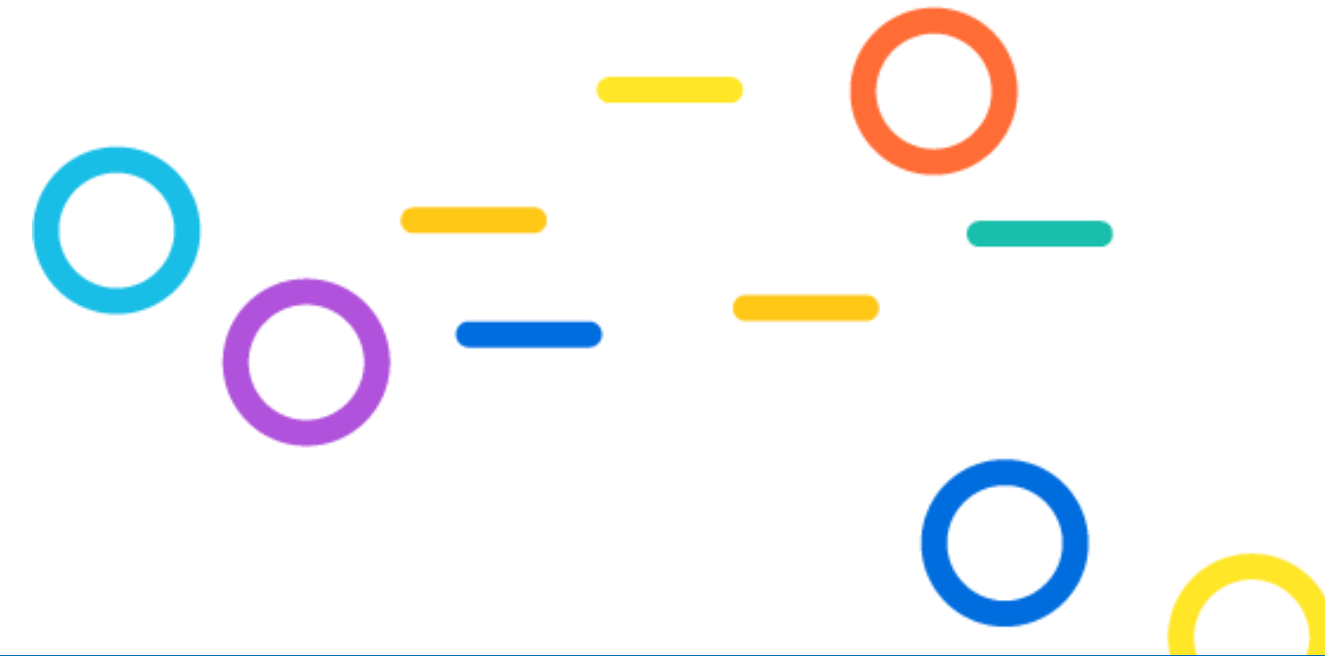
# Simons Searchlight Blood Sample Collection



Simons Searchlight collects blood from families that have consented to provide samples as a part of their participation in the study. The blood samples collected for Simons Searchlight are de-identified and stored at a research repository. Qualified researchers can request to access these blood samples to better understand the genetic variants in Simons Searchlight.

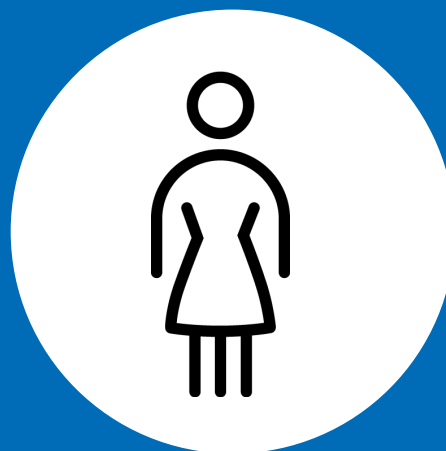
## Each family intending to have their blood drawn must:

- Complete the online consent form for each participating family member and opt to provide a research sample.
- Submit their genetic testing lab report.
- Study coordinators will then confirm your eligibility.



## Who can provide a blood sample?

\*Coordinators will let you know if blood will be collected from siblings at this meeting.



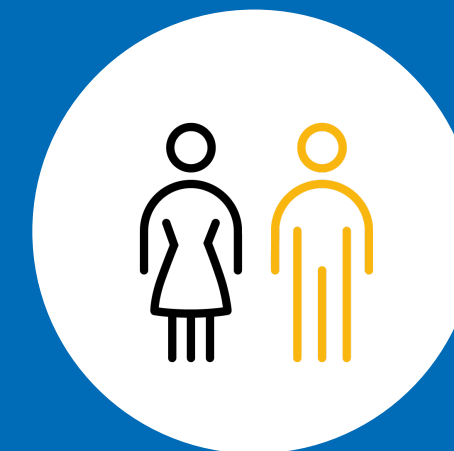
**Biological Mother**



**Biological Father**



**Child with genetic condition**



**2 Full Siblings**

# How does each family member consent for the blood sample?

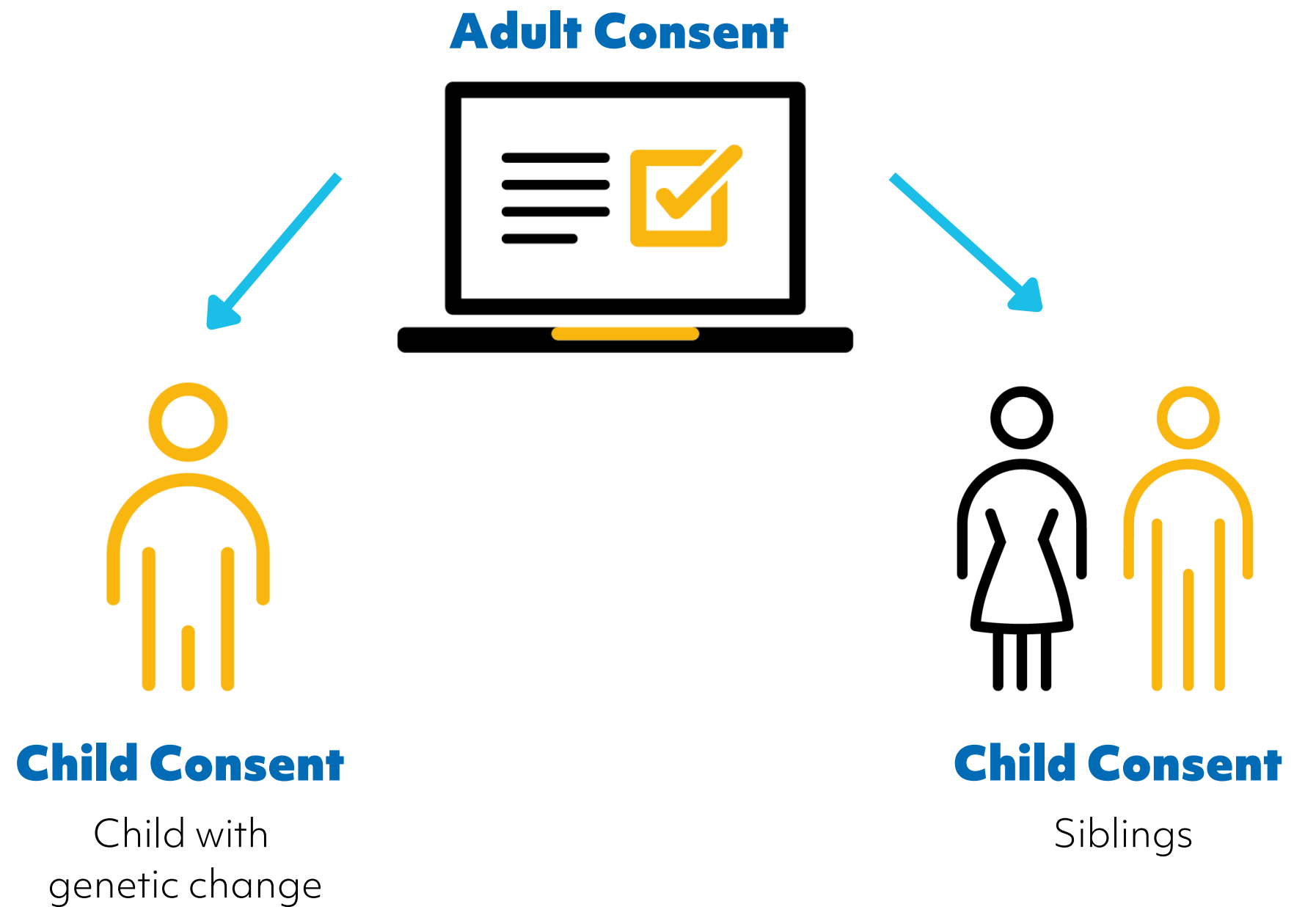
## 1ST ACCOUNT

One biological parent registers for a research account, adds profiles for each child, and completes their consent forms, opting into research sample collection.

## 2ND ACCOUNT

Your child's other biological parent registers for a separate\* research account and completes their consent forms, opting into research sample collection.

*\*Anyone over 18 must register for their own research account due to privacy regulations.*



## Questions?

If you have questions about how to create accounts or if you want to confirm that you opted into providing a research sample, please contact the study coordinators at [coordinator@simonssearchlight.org](mailto:coordinator@simonssearchlight.org) or by phone at 1-855-329-5638.