

Survey 4
Access to education, therapies,
and services during COVID-19



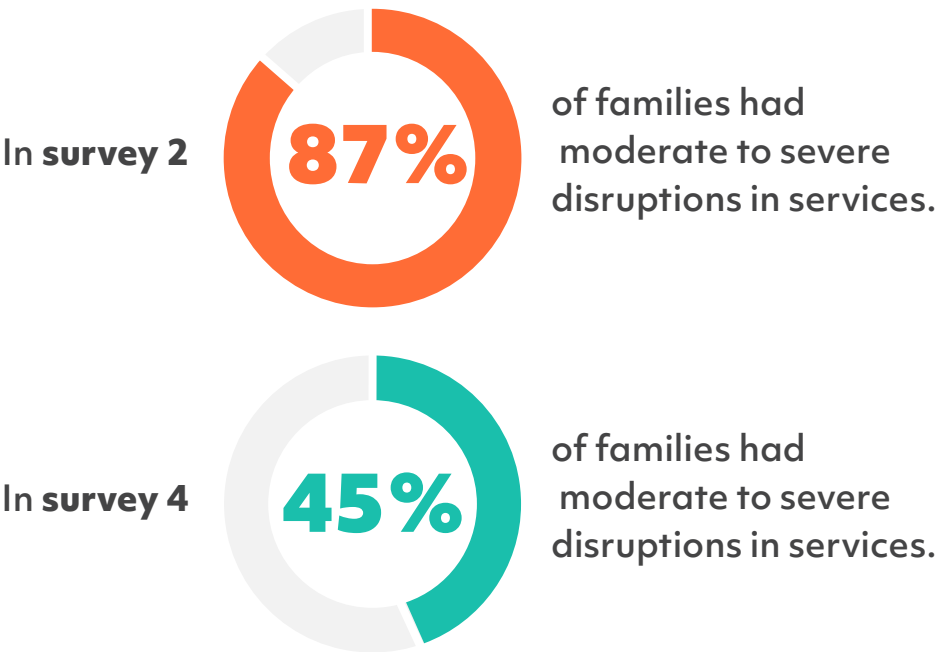
Sent to **664 families**
Completed by **352 families**
Collected **Nov 12, 2020 to Nov 30, 2020**
Across **55 different genetic conditions** and **28 countries**

Who Participated?

Survey 4 participant demographics were similar to Simons Searchlight COVID-19 surveys 1-3.

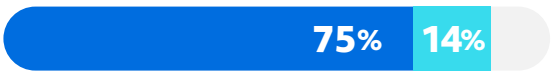
Effects on services

Disruptions to services, therapies or medical supports due to COVID-19 decreased since survey 2.



Dependents received more therapies in-person

Applied Behavior Analysis Services



75% of **ABA services** or other behavioral therapies were being received in-person.

14% of **ABA services** were being provided through a hybrid model (remote/in-person).

Physical or Occupational Therapy



61% of **physical or occupational therapy** was received in-person.

19% of **physical or occupational therapy** was being provided through a hybrid model (remote/in-person).

What school looked like

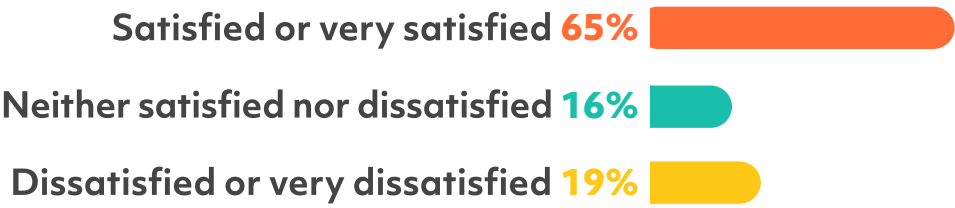
Dependents had **more access to in-person education**.



92% of respondents said their child had an individualized education plan, or **IEP**.

65% of caregivers were **satisfied** with their child’s IEP.

Most caregivers were satisfied with their current school experience.



Wearing masks during COVID-19



Some children were having **difficulties** wearing a face mask.

38% having difficulties.

62% were not.



For children having difficulties wearing a face mask, this **was disruptive**.

65% had a moderate to severe disruption.

35% had minimal or no disruption.

SARS-CoV-2 infection

Only one participant
with a genetic condition
reported being hospitalized
from SARS-CoV-2 to date.



A special **thank you**
to the families who shared
their experiences with us!



SimonsSearchlight.org